

# THERMAL IMAGER



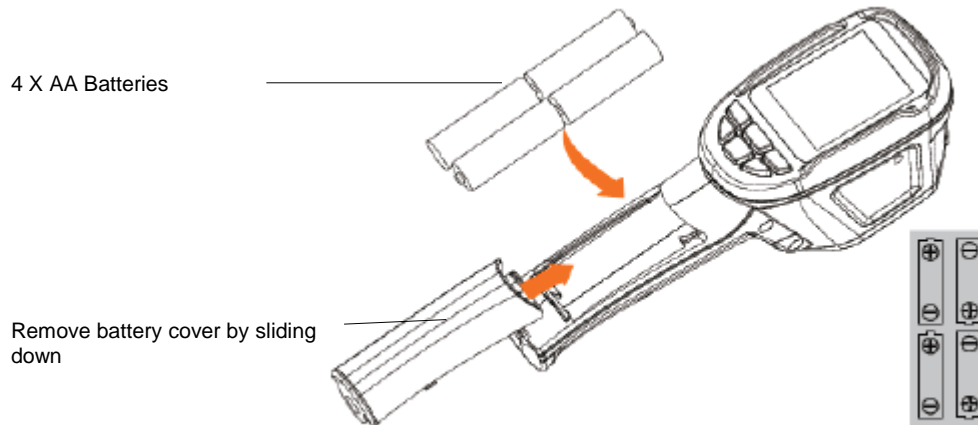
## Features and Benefits:

- 2.4" High resolution display
- Measures temperatures from  $-4^{\circ}\text{F}$  to  $896^{\circ}\text{F}$
- Dual camera lenses blend visible and Infrared for easy target recognition
- Stores images on SD-Micro card for later review

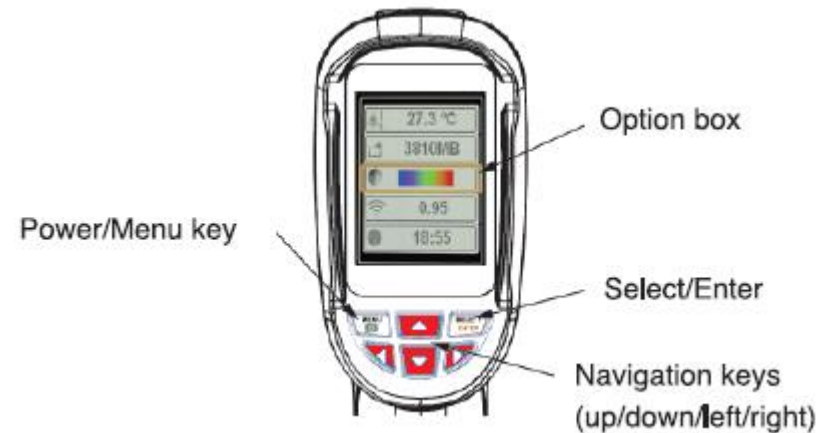


# THERMAL IMAGER

## Battery Replacement



## Button Navigation



### Power/Menu Key:










- Turn ON : Press the Power button for 5 seconds to power up the Thermal Imager
- Turn OFF: Press the Power button for 5 seconds to turn off the Thermal Imager
- Menu : Press Menu momentarily for Menu display

### Select/Enter Key:

- Use the select key to select menu items

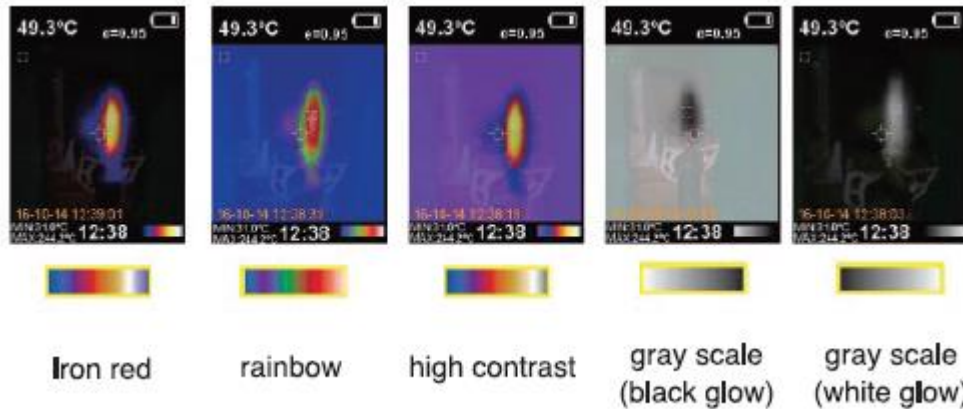
# THERMAL IMAGER

## Menu

Icon	Description
 °C	Unit of temperature
BG 0°C	Background temperature
 3767MB	Micro-SD memory capacity
 	Color palette
ε 0.95	Reflective background emissivity
 ON	Spot temperature marking
 25°C	Ambient temperature
 12:12	Time and date setting
 5000	Image library
 10%	Background light

# THERMAL IMAGER

## Color Pallet

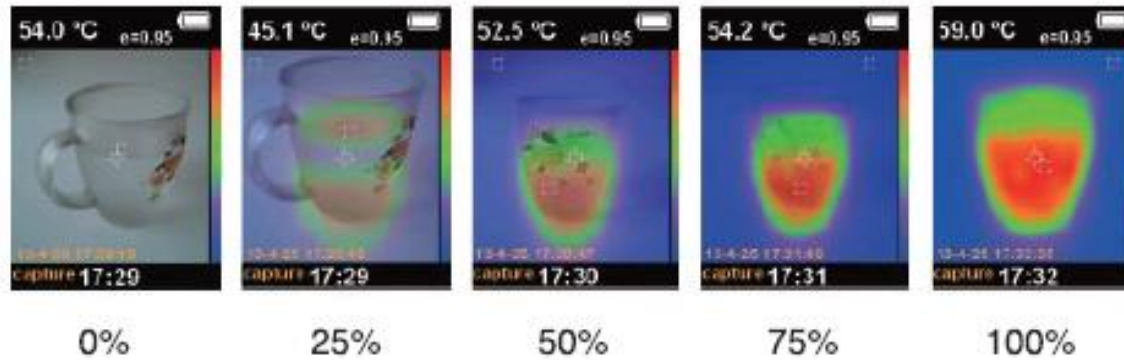


## Reflective background Emissivity

Materials	Thermal Radiation	Materials	Thermal Radiation
Asphalt	0.90~0.98	Black cloth	0.98
Concrete	0.94	Human skin	0.98
Cement	0.96	Bubble	0.75~0.80
Sand	0.90	Charcoal dust	0.96
Soil	0.92~0.96	Paint	0.80~0.95
Water	0.92~0.96	Matt paint	0.97
Ice	0.96~0.98	Black rubber	0.94
Snow	0.83	Plastic	0.85~0.95
Glass	0.90~0.95	Wood	0.90
Ceramic	0.90~0.94	Paper	0.70~0.94
Marble	0.94	Chromic oxide	0.81
Gypsum	0.80~0.90	Copper oxide	0.78
Mortar	0.89~0.91	Ferric oxide	0.78~0.82
Brick	0.93~0.96	Texture	0.90

# THERMAL IMAGER

## Image Mixing



Use Left and Right Buttons to change Image Mixing

# SIDE BY SIDE COMPARISON

STEELMAN PRO | STI-241 THERMAL IMAGER

LAST UPDATED: 06/19/2017

## STEELMAN PRO STI-241 THERMAL IMAGER



PRODUCT #  
**79041**

WEIGHT  
**0.72 lbs.**

### FEATURES & BENEFITS

- Dual camera lens blends visible and Infrared images for easy target recognition
- Measure temperature ranges from -4°F to 896°F
- 2.4" Full-angle high resolution
- Stores Images on Micro-SD card for later review on other devices
- Runs on 4 X AA Batteries

## SNAP-ON



PRICE  
\$1,395

PRODUCT #  
EETH300

WEIGHT  
0.75 lbs.

- Measure temperature ranges from -4°F to 840°F
- 3.5" color screen; 320x240 resolution
- Runs on Rechargeable high-power Lithium-Ion battery

## FLUKE



PRICE  
\$550

PRODUCT #  
FLK-VT04A

WEIGHT  
2.3 lbs.

- Measure temperature ranges from 14°F to 482°F
- 2.2" in diagonal
- Runs on 4 X AA Batteries

## DeWalt



PRICE  
\$1,152

PRODUCT #  
DCT416S1

WEIGHT  
5.0 lbs.

- Measure temperature ranges from 14°F to 480°F
- 2.2" Color Display
- Runs on 12V MAX\* Li-Ion battery

## FLIR



PRICE  
\$399

PRODUCT #  
TG167

WEIGHT

- Measure temperature ranges from -13°F to 716°F
- 3.2" TFT LCD
- Rechargeable Li-ion Battery

# SIDE BY SIDE COMPARISON

STEELMAN PRO | STI-241 THERMAL IMAGER

LAST UPDATED: 06/19/2017

## STEELMAN PRO STI-241 THERMAL IMAGER



PRODUCT #  
**79041**

WEIGHT  
**0.72 lbs.**

### FEATURES & BENEFITS

- Dual camera lens blends visible and Infrared images for easy target recognition
- Measure temperature ranges from -4°F to 896°F
- 2.4" Full-angle high resolution
- Stores Images on Micro-SD card for later review on other devices
- Runs on 4 X AA Batteries

## Master-Cool

PRICE  
\$426

PRODUCT #  
MSC-52300

WEIGHT  
0.75 lbs.



- Measure temperature ranges from -4°F to 482°F
- 2" Color Display

## FLUKE

PRICE  
\$2,499

PRODUCT #  
FLK-TI100

WEIGHT  
7.0 lbs.



- Blended Images video and IR
- Measure temperature ranges from -4°F to 482°F
- 3.5" Color LCD
- Rechargeable Li-ion Battery

## FLUKE

PRICE  
\$3,299

PRODUCT #  
TIS45

WEIGHT  
5.0 lbs.



- Measure temperature ranges from -4°F to 662°F
- 3.5" Color LCD
- Rechargeable Li-ion Battery